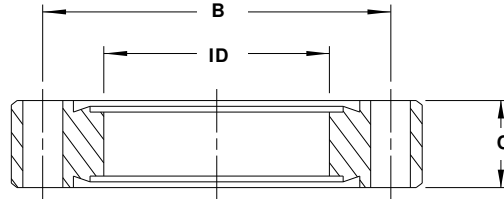


FLANGES

[ASA](#) [ISO](#) [NW](#) [WIRE SEAL](#) [ZERO LENGTH](#) [Z-SEAL](#)

DOUBLE FACED FLANGES (1 1/3" - 13 1/4")



PART NUMBER	REFERENCE NUMBER	FLANGE O.D.	I.D.	B	C	NO. OF HOLES	HOLE DIAMETER	PRICE \$
150393	133-000-DFF	1.33	Blank	1.06	.29	6	.172	20
150394	133-025-DFF	1.33	.25	1.06	.29	6	.172	20
150395	133-037-DFF	1.33	.38	1.06	.29	6	.172	20
150396	133-050-DFF	1.33	.50	1.06	.29	6	.172	22
150397	218-000-DFF	2.12	Blank	1.63	.47	4	.265	22
150398	218-075-DFF	2.12	.75	1.63	.47	4	.265	22
150399	218-100-DFF	2.12	1.00	1.63	.47	4	.265	35
150400	275-000-DFF	2.73	Blank	2.31	.50	6	.265	35
150401	275-025-DFF	2.73	.25	2.31	.50	6	.265	35
150402	275-050-DFF	2.73	.50	2.31	.50	6	.265	35
150403	275-075-DFF	2.73	.75	2.31	.50	6	.265	35
150404	275-100-DFF	2.73	1.00	2.31	.50	6	.265	35
150405	275-125-DFF	2.73	1.25	2.31	.50	6	.265	35
150406	275-150-DFF	2.73	1.50	2.31	.50	6	.265	35
150407	338-000-DFF	3.37	Blank	2.85	.62	8	.332	55
150408	338-150-DFF	3.37	1.50	2.85	.62	8	.332	55
150409	338-200-DFF	3.37	2.00	2.85	.62	8	.332	55
150410	450-000-DFF	4.47	Blank	3.63	.68	8	.332	80
150411	450-150-DFF	4.47	1.50	3.63	.68	8	.332	80
150412	450-200-DFF	4.47	2.00	3.63	.68	8	.332	80
150413	450-250-DFF	4.47	2.50	3.63	.68	8	.332	80
150414	458-000-DFF	4.62	Blank	4.03	.75	10	.332	90
150415	458-250-DFF	4.62	2.50	4.03	.75	10	.332	90
150416	458-300-DFF	4.62	3.00	4.03	.75	10	.332	90
150417	600-000-DFF	5.97	Blank	5.13	.78	16	.332	120
150418	600-400-DFF	5.97	4.00	5.13	.78	16	.332	120
150419	675-000DFF	6.75	Blank	5.97	.84	18	.332	140
150420	675-400-DFF	6.75	4.00	5.97	.84	18	.332	140
150421	675-500-DFF	6.75	5.00	5.97	.84	18	.332	140
150422	800-000-DFF	7.97	Blank	7.13	.87	20	.332	160
150423	800-600-DFF	7.97	6.00	7.13	.87	20	.332	160
150424	1000-000-DFF	9.97	Blank	9.13	.97	24	.332	250
150425	1000-800-DFF	9.97	8.00	9.13	.97	24	.332	250
150426	1325-0000-DFF	13.25	Blank	12.06	1.12	30	.390	400
150427	1325-1000-DFF	13.25	10.00	12.06	1.12	30	.390	400
150428	1325-1075-DFF	13.25	10.75	12.06	1.12	30	.390	400