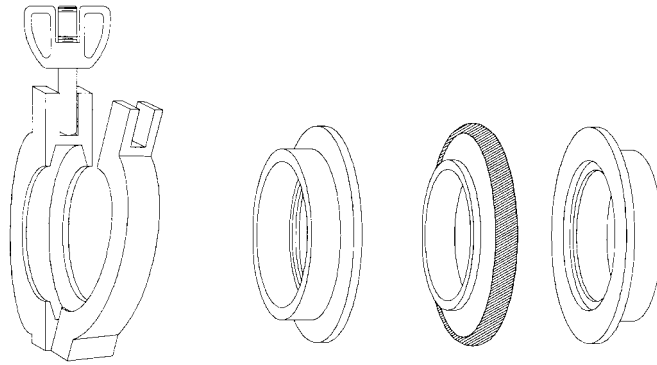


FLANGES ASSEMBLY HARDWARE

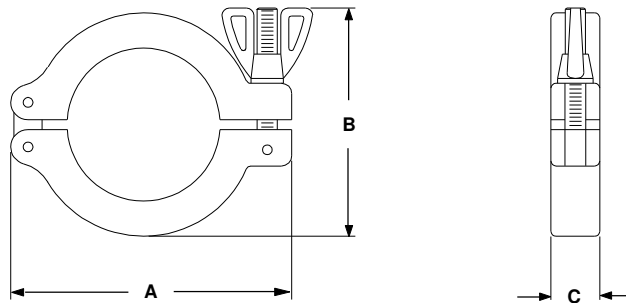
[ASA](#) [DOUBLE FACED](#) [ISO](#) [NW](#) [WIRE SEAL](#) [Z-SEAL](#)

NW HINGED CLAMP ASSEMBLY



The above detailed hinged clamp assembly of the DVM NW Series of quick release flanges illustrates the simplicity of this design. For use in vacuum systems when metal sealed flanges are not required. May be used in vacuum systems to 10^{-8} torr and/or when temperatures do not exceed 150° C. Especially useful in systems where frequent disassembly is necessary.

All dimensions of the flange and centering ring assemblies conform to Pneurop Bulletin 6606*. DVM has elected to manufacture the NW Series of flanges to match the standard USA tube sizes from 1/2" to 2".



NW FLANGE CLAMPS

PART NUMBER	REFERENCE NUMBER	A	B	C	PRICE \$
160109	NW-16	1.6	2.6	1/2	6
160110	NW-25	1.9	2.9	1/2	8
160111	NW-40	2.6	3.7	3/4	9
160112	NW-50	3.6	5	1	15

*European Committee of Manufacturers