

FLANGES

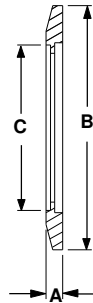
[ASA](#) [DOUBLE FACED](#) [ISO](#) [WIRE SEAL](#) [ZERO LENGTH](#) [Z-SEAL](#)

NW FLANGES (STAINLESS STEEL)

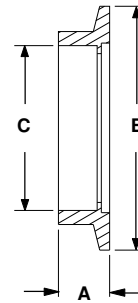
NW Blank Flange



NW Bored Flange



NW Socket Weld Flange



NW BLANK FLANGE

PART NUMBER	REFERENCE NUMBER	A	B	C	\$ PRICE
110000	NW-16	.20	1.18	-	6
110001	NW-25	.20	1.57	-	7
110002	NW-40	.20	2.16	-	11
110003	NW-50	.20	2.95	-	13

NW BORED FLANGE

PART NUMBER	REFERENCE NUMBER	A	B	C	\$ PRICE
110004	NW-16	.20	1.18	.76	8
110005	NW-25	.20	1.57	1.01	9
110006	NW-40	.20	2.16	1.51	13
110007	NW-50	.20	2.95	2.01	17

NW SOCKET WELD FLANGE

PART NUMBER	REFERENCE NUMBER	A	B	C	\$ PRICE
110008	NW-16	.50	1.18	.76	7
110009	NW-25	.50	1.57	1.01	7
110010	NW-40	.75	2.16	1.51	11
110011	NW-50	.75	2.95	2.01	16

FLANGES

[ASA](#) [DOUBLE FACED](#) [ISO](#) [WIRE SEAL](#) [ZERO LENGTH](#) [Z-SEAL](#)

NW STUB FLANGES (STAINLESS STEEL & ALUMINUM)

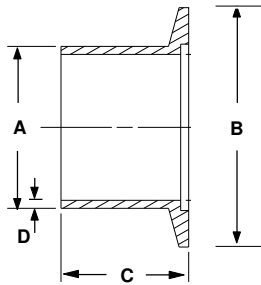


Figure 1 Long Weld Flange

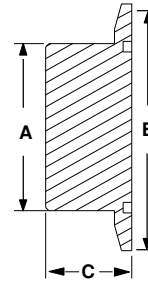


Figure 2 Unbored Stub Flange

STAINLESS STEEL - FIGURE 1

PART NUMBER	REFERENCE NUMBER	A	B	C	D	\$ PRICE
110012	NW-16	.75	1.18	1.57	.065	12
110013	NW-25	1.00	1.57	1.57	.065	14
110014	NW-40	1.50	2.16	1.57	.065	19
110015	NW-50	2.00	2.95	1.57	.065	25

ALUMINUM - FIGURE 1

PART NUMBER	REFERENCE NUMBER	A	B	C	D	\$ PRICE
110016	NW-16	.75	1.18	1.57	.065	11
110017	NW-25	1.00	1.57	1.57	.065	13
110018	NW-40	1.50	2.16	1.57	.065	16
110019	NW-50	2.00	2.95	1.57	.065	19

STAINLESS STEEL - FIGURE 2

PART NUMBER	REFERENCE NUMBER	A	B	C	\$ PRICE
110020	NW-16	.75	1.18	.75	10
110021	NW-25	1.00	1.57	.75	12
110022	NW-40	1.50	2.16	1.00	17
110023	NW-50	2.00	2.95	1.00	23

ALUMINUM - FIGURE 2

PART NUMBER	REFERENCE NUMBER	A	B	C	\$ PRICE
110028	NW-16	.75	1.18	.75	8
110029	NW-25	1.00	1.57	.75	10
110030	NW-40	1.50	2.16	1.00	15
110031	NW-50	2.00	2.95	1.00	18