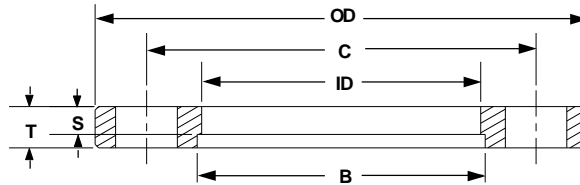


FLANGES

DOUBLE FACED ISO NW WIRE SEAL ZERO LENGTH Z-SEAL

ASA FIXED FLANGES (4¼" - 16")



PART NUMBER*	TYPE	ANSI	O.D.	I.D.	B	C	T	S	BOLT #	HOLES (DIA.)	PRICE \$
130001	ASA 4.2	1"	4.25	-	-	3.13	.50	-	4	.62	54
130002	ASA 4.2	1"	4.25	1.37	1.51	3.13	.50	.34	4	.62	55
130003	ASA 5	1.5"	5.00	-	-	3.88	.50	-	4	.62	80
130004	ASA 5	1.5"	5.00	1.87	2.00	3.88	.50	.34	4	.62	85
130005	ASA 6	2"	6.00	-	-	4.75	.50	-	4	.68	90
130006	ASA 6	2"	6.00	3.40	3.51	4.75	.50	.34	4	.68	95
130007	ASA 7.5	3"	7.50	-	-	6.00	.50	-	4	.75	110
130008	ASA 7.5	3"	7.50	3.83	4.01	6.00	.50	.34	4	.75	120
130009	ASA 9	4"	9.00	-	-	7.50	.50	-	8	.75	135
130010	ASA 9	4"	9.00	5.34	5.51	7.50	.50	.34	8	.75	145
130011	ASA 11	6"	11.00	-	-	9.50	.75	-	8	.81	220
130012	ASA 11	6"	11.00	7.34	7.51	9.50	.75	.34	8	.81	220
130013	ASA 16	10"	16.00	-	-	14.25	1.00	-	12	.81	425
130014	ASA 16	10"	16.00	11.63	12.02	14.25	1.00	.34	12	.81	425

* Add "OR" to part number to order O-Ring Groove Flange

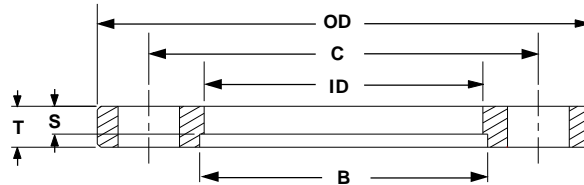
ASSEMBLY HARDWARE

PART NUMBER	TYPE	DESCRIPTION	QTY/PKG	PRICE \$
160084	ASA 4.2	S.S Hexhead bolts - 9/16-12 x 1.5" nuts and washers	4	10
160091	ASA 4.2	O-Ring (Elastomer)	1	2
160085	ASA 5	S.S Hexhead bolts - 9/16-12 x 1.5" nuts and washers	4	10
160092	ASA 5	O-Ring (Elastomer)	1	4
160086	ASA 6	S.S Hexhead bolts - 5/8-11 x 1.5" nuts and washers	4	15
160093	ASA 6	O-Ring(Elastomer)	1	4
160087	ASA 7.5	S.S Hexhead bolts - 5/8-11 x 1.5" nuts and washers	4	15
160094	ASA 7.5	O-Ring (Elastomer)	1	6
160088	ASA 9	S.S Hexhead bolts - 5/8-11 x 1.5" nuts and washers	8	28
160095	ASA 9	O-Ring (Elastomer)	1	6
160089	ASA 11	S.S Hexhead bolts - 3/4-10 x 2.25" nuts and washers	8	35
160096	ASA 11	O-Ring (Elastomer)	1	6
160090	ASA 16	S.S Hexhead bolts - 3/4-10 x 2.25" nuts and washers	12	75
160097	ASA 16	O-Ring (Elastomer)	1	8

FLANGES

DOUBLE FACED ISO NW WIRE SEAL ZERO LENGTH Z-SEAL

ASA ROTATABLE FLANGES (4 1/4" - 16")



PART NUMBER*	TYPE	ANSI	O.D.	I.D.	B	C	T	S	BOLT #	HOLES (DIA.)	PRICE \$
130301	ASA 4.2	1"	4.25	-	-	3.13	.50	-	4	.62	70
130302	ASA 4.2	1"	4.25	1.37	1.51	3.13	.50	.34	4	.62	85
130303	ASA 5	1.5"	5.00	-	-	3.88	.50	-	4	.62	105
130304	ASA 5	1.5"	5.00	1.87	2.00	3.88	.50	.34	4	.62	110
130305	ASA 6	2"	6.00	-	-	4.75	.50	-	4	.68	150
130306	ASA 6	2"	6.00	3.40	3.51	4.75	.50	.34	4	.68	170
130307	ASA 7.5	3"	7.50	-	-	6.00	.50	-	4	.75	185
130308	ASA 7.5	3"	7.50	3.83	4.01	6.00	.50	.34	4	.75	195
130309	ASA 9	4"	9.00	-	-	7.50	.50	-	8	.75	200
130310	ASA 9	4"	9.00	5.34	5.51	7.50	.50	.34	8	.75	215
130311	ASA 11	6"	11.00	-	-	9.50	.75	-	8	.81	305
130312	ASA 11	6"	11.00	7.34	7.51	9.50	.75	.34	8	.81	335
130313	ASA 16	10"	16.00	-	-	14.25	1.00	-	12	.81	505
130314	ASA 16	10"	16.00	11.63	12.02	14.25	1.00	.34	12	.81	550

* Add "OR" to part number to order O-Ring Groove Flange

ASSEMBLY HARDWARE

PART NUMBER	TYPE	DESCRIPTION	QTY/PKG	PRICE \$
160084	ASA 4.2	S.S Hexhead bolts - 9/16-12 x 1.5" nuts and washers	4	10
160091	ASA 4.2	O-Ring (Elastomer)	1	2
160085	ASA 5	S.S Hexhead bolts - 9/16-12 x 1.5" nuts and washers	4	10
160092	ASA 5	O-Ring (Elastomer)	1	4
160086	ASA 6	S.S Hexhead bolts - 5/8-11 x 1.5" nuts and washers	4	15
160093	ASA 6	O-Ring (Elastomer)	1	4
160087	ASA 7.5	S.S Hexhead bolts - 5/8-11 x 1.5" nuts and washers	4	15
160094	ASA 7.5	O-Ring (Elastomer)	1	6
160088	ASA 9	S.S Hexhead bolts - 5/8-11 x 1.5" nuts and washers	8	28
160095	ASA 9	O-Ring (Elastomer)	1	6
160089	ASA 11	S.S Hexhead bolts - 3/4-10 x 2.25" nuts and washers	8	35
160096	ASA 11	O-Ring(Elastomer)	1	6
160090	ASA 16	S.S Hexhead bolts - 3/4-10 x 2.25" nuts and washers	12	75
160097	ASA 16	O-Ring (Elastomer)	1	8