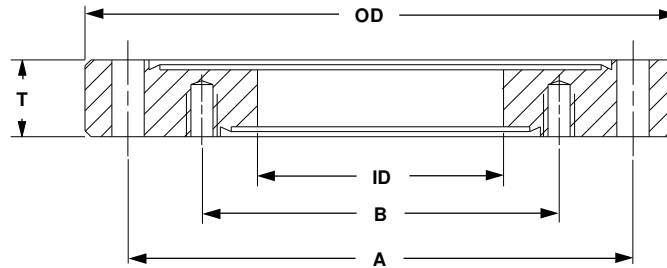


# FLANGES

[ASA](#) [DOUBLE FACED](#) [ISO](#) [NW](#) [WIRE SEAL](#) [Z-SEAL](#)

## ZERO LENGTH REDUCING FLANGES *(2 1/8" thru 6 3/4")*



### Z-SEAL TO Z-SEAL

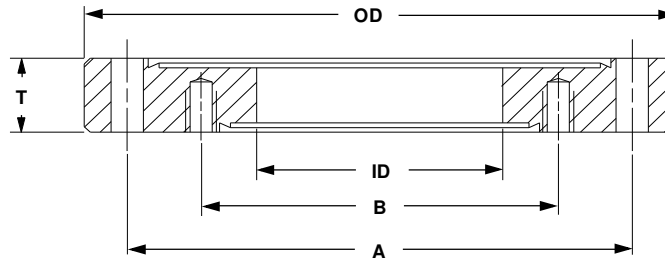
PART NUMBER	FLANGE O.D.		I.D.	T	BOLT CIRCLE		REFERENCE	PRICE \$
	LARGE	SMALL			A	B		
140041	2.11	1.33	.62	.47	1.625	1.062	2 1/8 x Mini	45
140042	2.73	1.33	.62	.50	2.312	1.062	2 3/4 x Mini	50
140043*	2.73	2.12	1.00	.50	2.312	1.625	2 3/4 x 2 1/8	55
140044	3.37	1.33	.62	.62	2.850	1.062	3 3/8 x Mini	55
140045	3.37	2.12	1.00	.62	2.850	1.625	3 3/8 x 2 1/8	55
140046*	3.37	2.75	1.50	.62	2.850	2.312	3 3/8 x 2 3/4	55
140047	4.47	1.33	.62	.68	3.628	1.062	4 1/2 x Mini	64
140048	4.47	2.12	1.00	.68	3.628	1.625	4 1/2 x 2 1/8	75
140049	4.47	2.75	1.50	.68	3.628	2.312	4 1/2 x 2 3/4	75
140050*	4.47	3.37	2.00	.68	3.628	2.850	4 1/2 x 3 3/8	94
140051	5.97	1.33	.62	.78	5.128	1.062	6 x Mini	95
140052	5.97	2.12	1.00	.78	5.128	1.625	6 x 2 1/8	95
140053	5.97	2.75	1.50	.78	5.128	2.312	6 x 2 3/4	95
140054	5.97	3.37	2.00	.78	5.128	2.850	6 x 3 3/8	115
140055	5.97	4.50	2.50	.78	5.128	3.628	6 x 4 1/2	115
140056	5.97	4.56	3.00	.78	5.128	4.030	6 x 4 5/8	115
140057	6.75	1.33	.62	.84	5.969	1.062	6 3/4 x Mini	115
140058	6.75	2.12	1.00	.84	5.969	1.625	6 3/4 x 2 1/8	115
140059	6.75	2.75	1.50	.84	5.969	2.312	6 3/4 x 2 3/4	115
140060	6.75	3.37	2.00	.84	5.969	2.850	6 3/4 x 3 3/8	125
140061	6.75	4.50	2.50	.84	5.969	3.628	6 3/4 x 4 1/2	125
140062	6.75	4.56	3.00	.84	5.969	4.030	6 3/4 x 4 5/8	125
140063*	6.75	6.00	4.00	.84	5.969	5.128	6 3/4 x 6	140

\* Indicates both sets of bolt holes are tapped

# FLANGES

[ASA](#)   [DOUBLE FACED](#)   [ISO](#)   [NW](#)   [WIRE SEAL](#)   [Z-SEAL](#)

## ZERO LENGTH REDUCING FLANGES (8" thru 13 1/4")



PART NUMBER	FLANGE O.D.		I.D.	T	BOLT CIRCLE		REFERENCE	PRICE \$
	LARGE	SMALL			A	B		
140064	7.97	1.33	0.62	.88	7.128	1.062	8 x Mini	135
140065	7.97	2.12	1.00	.88	7.128	1.625	8 x 2 1/8	135
140066	7.97	2.75	1.50	.88	7.128	2.312	8 x 2 3/4	135
140067	7.97	3.37	2.00	.88	7.128	2.850	8 x 3 3/8	145
140068	7.97	4.50	2.50	.88	7.128	3.628	8 x 4 1/2	145
140069	7.97	4.62	3.00	.88	7.128	4.030	8 x 4 5/8	155
140070	7.97	6.00	4.00	.88	7.128	5.128	8 x 6	155
140071*	7.97	6.75	5.00	.88	7.128	5.969	8 x 6 3/4	155
140072	9.97	1.33	0.62	.97	9.128	1.062	10 x Mini	220
140073	9.97	2.12	1.00	.97	9.128	1.625	10 x 2 1/8	220
140074	9.97	2.75	1.50	.97	9.128	2.312	10 x 2 3/4	220
140075	9.97	3.37	2.00	.97	9.128	2.850	10 x 3 3/8	220
140076	9.97	4.50	2.50	.97	9.128	3.628	10 x 4 1/2	225
140077	9.97	4.62	3.00	.97	9.128	4.030	10 x 4 5/8	225
140078	9.97	6.00	4.00	.97	9.128	5.128	10 x 6	230
140079	9.97	6.75	5.00	.97	9.128	5.969	10 x 6 3/4	250
140080	9.97	8.00	6.00	.97	9.128	7.128	10 x 8	270
140081	13.25	1.33	0.62	1.12	12.060	1.062	13 1/4 x Mini	350
140082	13.25	2.12	1.00	1.12	12.060	1.625	13 1/4 x 2 1/8	350
140083	13.25	2.75	1.50	1.12	12.060	2.312	13 1/4 x 2 3/4	350
140084	13.25	3.37	2.00	1.12	12.060	2.850	13 1/4 x 3 3/8	350
140085	13.25	4.50	2.50	1.12	12.060	3.628	13 1/4 x 4 1/2	350
140086	13.25	4.62	3.00	1.12	12.060	4.030	13 1/4 x 4 5/8	350
140087	13.25	6.00	4.00	1.12	12.060	5.128	13 1/4 x 6	375
140088	13.25	6.75	5.00	1.12	12.060	5.969	13 1/4 x 6 3/4	375
140089	13.25	8.00	6.00	1.12	12.060	7.128	13 1/4 x 8	390
140090	13.25	10.00	8.00	1.12	12.060	9.128	13 1/4 x 10	390

\* Indicates both sets of bolt holes are tapped