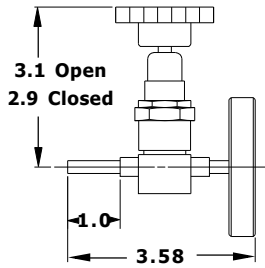


## ROUGHING ACCESSORIES

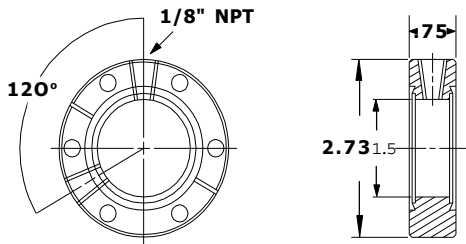
- [ Braided Flexible Hose ] [ Coaxial Foreline Traps ]
- [ High Pressure Flexible Hose ] [ Molecular Sieve Traps ]
- [ Titanium Sublimation Pump Nipple ]
- [ Unbraided Flexible Hose ] [ Vent & Back Fill Valves ]

### VENT AND BACK FILL VALVES



The valves are stainless steel with metal bellows shaft seals. They are mounted on a flange and have a 1/4" O.D. tubulation for attaching gas lines. Other terminations are available.

PART NUMBER	REFERENCE NUMBER	FLANGE DESCRIPTION	PRICE \$
150300	133-V	Mini flange with valve	225
150301	275-V	2 3/4" flange with valve	230
150302	NW-16V	NW-16 flange with valve	225
150303	NW-25V	NW-25 flange with valve	225
150304	NW-40V	NW-40 flange with valve	235
150305	NW-50V	NW-50 flange with valve	235



Double sided flanges are used in roughing manifolds as a convenient and space saving way to attach thermocouple tubes and/or vent valves to a system. Available in all sizes, but 2 3/4" size is the most commonly used size.

#### DOUBLE SIDED FLANGES

PART NUMBER	REFERENCE NUMBER	FLANGE O.D.	FLANGE DESCRIPTION	THICKNESS	PRICE \$
150400	275-000-DFF	2 3/4"	No accessory holes	3/4"	35
150450	275-000-DFF-1	2 3/4"	One 1/8 NPT hole	3/4"	50
150451	275-000-DFF-2	2 3/4"	Two 1/8 NPT hole	3/4"	60
150452	275-000-DFF-TC	2 3/4"	Thermocouple tube	3/4"	105
150453	275-000-DFF-V	2 3/4"	Stainless steel bellows vent valve	3/4"	250
150454	275-000-DFF-TCV	2 3/4"	Thermocouple & stainless steel metal bellows vent valve	3/4"	295