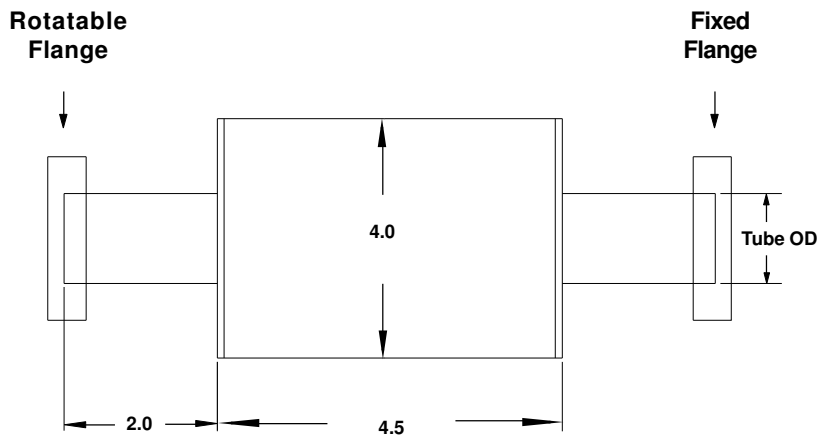


ROUGHING ACCESSORIES

- [\[Braided Flexible Hose \]](#) [\[Coaxial Foreline Traps \]](#)
[\[High Pressure Flexible Hose \]](#) [\[Molecular Sieve Traps \]](#)
[\[Titanium Sublimation Pump Nipple \]](#)
[\[Unbraided Flexible Hose \]](#) [\[Vent & Back Fill Valves \]](#)

COAXIAL FORELINE TRAPS

The DVM bronze wool filled trap effectively prevents backstreaming of hydrocarbons from roughing pumps. The bodies are made from type 304 stainless steel. Traps are offered with a variety of end fittings.



| PART NUMBER | REFERENCE NUMBER | TYPE OF CONNECTION | TUBE O.D. | PRICE \$ |
|-------------|------------------|--------------------|-----------|----------|
| 150100 | FTC-075 | Hose | 3/4 | 100 |
| 150101 | FTC-075-Z | Z-Seal 1 1/3 | 3/4 | 130 |
| 150102 | FTC-075-N | NW-16 | 3/4 | 130 |
| 150103 | FTC-100 | Hose | 1 | 120 |
| 150104 | FTC-100-Z | Z-Seal 2 1/8 | 1 | 150 |
| 150105 | FTC-100-N | NW-25 | 1 | 150 |
| 150106 | FTC-150 | Hose | 1 1/2 | 130 |
| 150107 | FTC-150-Z | Z-Seal 2 3/4 | 1 1/2 | 160 |
| 150108 | FTC-150-N | NW-40 | 1 1/2 | 160 |
| 150109 | FTC-200 | Hose | 2 | 145 |
| 150110 | FTC-200-Z | Z-Seal 3 3/8 | 2 | 205 |
| 150111 | FTC-200-N | NW-50 | 2 | 160 |

Larger sizes available. Prices upon request.