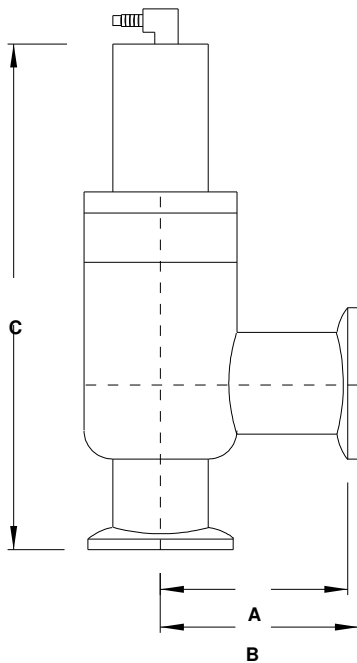


ROUGHING ACCESSORIES

[BAKEABLE RIGHT ANGLE] [ELECTROPNEUMATICALLY RIGHT ANGLE]
 [HIGH & ULTRA HIGH VACUUM VALVES FEATURES] [IRIS]
 [STRAIGHT THROUGH] [VENT & BACK FILL]

RIGHT ANGLE VALVES FOR VACUUM SERVICE

- Electropneumatically operated
- Elastomer o-ring bonnet seal
- Elastomer o-ring poppet seal
- Bakeable to 150°C
- 115 Volt solenoid
- 70-100 psi air
- 3/4" - 1 1/2" spring loaded closed



PART NUMBER	FLANGE SIZE	PORT	A	B	C	PRICE \$
190001	NW-16	0.75"	1.35"	1.50"	6.4"	250.00
190002	NW-25	1.00"	1.85"	2.04"	6.8"	280.00
190003	NW-40	1.50"	2.26"	2.47"	8.1"	315.00