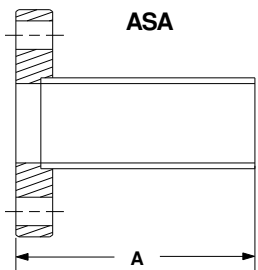
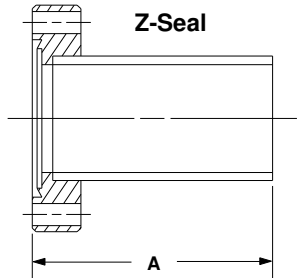
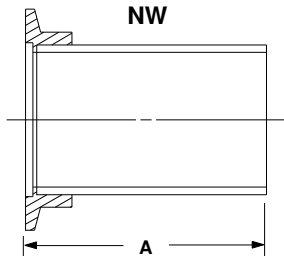


TUBE FITTINGS

[CROSSES](#) [CUBE \(6-WAY CROSS\)](#) [ELBOWS](#)

[FLEXIBLE COUPLINGS](#) [NIPPLES](#) [TEES](#)

HALF NIPPLES - STAINLESS STEEL



ASA HALF NIPPLE

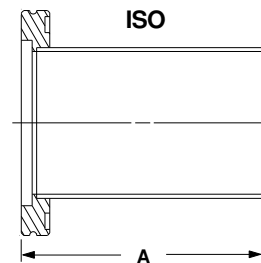
PART NUMBER	FLANGE O.D.	TUBE O.D.	A	PRICE \$
130700	5.00	1.50	3.25	120
130701	5.00	2.00	3.25	120
130702	5.00	2.50	3.25	130
130703	6.00	3.00	4.00	150
130704	7.50	4.00	4.50	190
130705	9.00	6.00	6.50	190
130706	11.00	8.75	7.50	300
130707	13.50	10.00	10.00	475
130708	16.00	12.00	10.00	590

NW HALF NIPPLE

PART NUMBER	FLANGE SIZE	TUBE O.D.	A	PRICE \$
110700	NW-16	.75	1.50	13
110701	NW-25	1.00	2.00	15
110702	NW-40	1.50	2.46	17
110703	NW-50	2.00	3.21	25

Z-SEAL HALF NIPPLE

PART NUMBER	FLANGE O.D.	TUBE O.D.	A	PRICE \$
100700	1.33	.75	1.50	25
100701	2.12	1.00	2.00	27
100702	2.75	1.50	2.46	28
100703	3.37	2.00	3.21	62
100704	4.50	2.50	4.12	92
100705	4.62	3.00	3.53	120
100706	6.00	4.00	5.31	135
100707	6.75	5.00	4.93	190
100708	8.00	6.00	6.56	240
100709	10.00	8.00	8.00	320
100710	13.25	10.00	10.00	475



ISO HALF NIPPLE

PART NUMBER	FLANGE SIZE	TUBE O.D.	A	PRICE \$
120700	ISO-63	2.50	4.00	75
120701	ISO-80	3.00	4.40	80
120702	ISO-100	4.00	5.12	90
120703	ISO-160	6.00	6.31	130
120704	ISO-200	8.00	7.75	205
120705	ISO-250	10.00	9.75	280
120706	ISO-320	12.75	10.90	450
120707	ISO-400	16.00	13.37	575
120708	ISO-500	20.00	15.87	730

NOTE: Add "OR" to the part number when ordering to designate O-Ring Groove if required

[\[Home \]](#) [\[Company \]](#) [\[Products \]](#) [\[Services \]](#) [\[Catalog \]](#) [\[Custom \]](#)