

TUBE FITTINGS

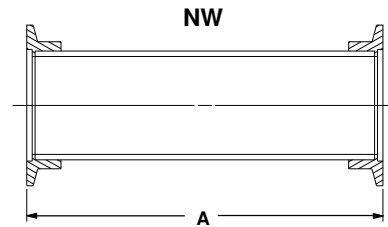
[CROSSES](#) [CUBE \(6-WAY CROSS\)](#) [ELBOWS](#)

[FLEXIBLE COUPLINGS](#) [HALF NIPPLES](#) [TEES](#)

NIPPLES - STAINLESS STEEL

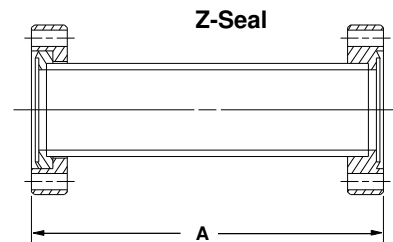
NW NIPPLE

PART NUMBER	FLANGE SIZE	TUBE O.D.	A	PRICE \$
110704	NW-16	.75	3.00	35
110705	NW-25	1.00	4.00	40
110706	NW-40	1.50	5.00	50
110707	NW-50	2.00	6.50	60



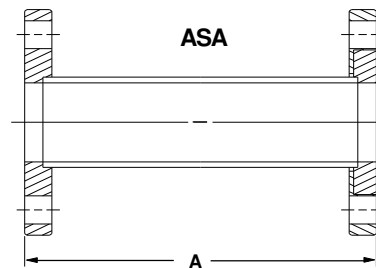
Z-SEAL NIPPLE

PART NUMBER	FLANGE O.D.	TUBE O.D.	A	PRICE \$
100711	1.33	.75	3.00	45
100712	2.12	1.00	4.00	50
100713	2.75	1.50	5.00	52
100714	3.37	2.00	6.50	120
100715	4.50	2.50	8.00	175
100716	4.62	3.00	8.00	200
100717	6.00	4.00	10.00	225
100718	6.75	5.00	10.00	320
100719	8.00	6.00	13.00	345
100720	10.00	8.00	16.00	665
100721	13.25	10.00	20.00	1,125



ASA NIPPLE

PART NUMBER	FLANGE O.D.	TUBE O.D.	A	PRICE \$
130718	5.00	1.50	6.50	210
130719	5.00	2.00	6.50	210
130720	5.00	2.50	6.50	255
130721	6.00	3.00	7.00	300
130722	7.50	4.00	8.25	350
130723	9.00	6.00	10.50	405
130724	11.00	8.00	14.75	700
130725	13.50	10.00	19.75	1,075
130726	16.00	12.00	19.75	1,190

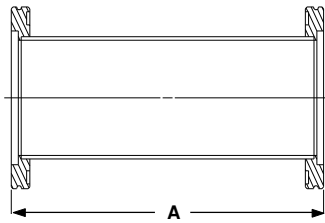


TUBE FITTINGS

[CROSSES](#) [CUBE \(6-WAY CROSS\)](#) [ELBOWS](#)

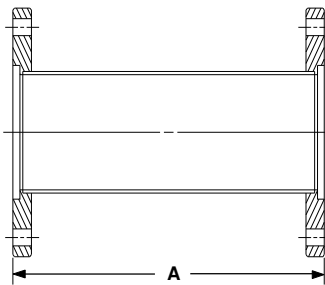
[FLEXIBLE COUPLINGS](#) [HALF NIPPLES](#) [TEES](#)

NIPPLES - STAINLESS STEEL



ISO NIPPLE

PART NUMBER	FLANGE SIZE	TUBE O.D.	A	PRICE \$
120709	ISO-63	2.50	8.00	165
120710	ISO-80	3.00	8.60	195
120711	ISO-100	4.00	10.25	210
120712	ISO-160	6.00	12.62	330
120713	ISO-200	8.00	15.50	480
120714	ISO-250	10.00	19.50	625
120715	ISO-320	12.75	21.75	910
120716	ISO-400	16.00	26.75	1,150
120717	ISO-500	20.00	31.75	1,430



BOLTED ISO FLANGE NIPPLE

PART NUMBER	FLANGE SIZE	TUBE O.D.	A	PRICE \$
120769	ISO-63	2.50	8.00	195
120770	ISO-80	3.00	8.60	245
120771	ISO-100	4.00	10.25	280
120772	ISO-160	6.00	12.62	440
120773	ISO-200	8.00	15.50	560
120774	ISO-250	10.00	19.50	1,045
120775	ISO-320	12.75	21.75	1,575
120776	ISO-400	16.00	26.75	2,160
120777	ISO-500	20.00	31.75	2,470